



KYOOOB  SPACE

...a different kind of space

saturn

relocatable

bespoke

turnkey package

jupiter

quality

permanent

multi-storey

robust

flexible



What is KYOOB



SPACE?

# KYOOB SPACE



## WHO WE ARE...

Kyooob Space Limited is a team of experienced professionals specialising in the design and supply of modular buildings.

## INTRODUCES...

**The Saturn** - robust and flexible modular building, for hire or sale.

**The Jupiter** - bespoke modular range, for sale.

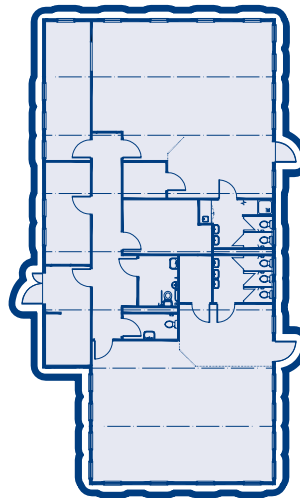
## WHAT WE DO...

Full turnkey package – we offer...

- Layout design and drawings
- Supply of the modular building
- Site surveys
- Foundations and groundworks
- Delivery and installation
- Service connection
- Ramps, staircases and steps



# KYOOB SPACE



- Buildings can be installed in accordance with individual school's requirements and timescales.
- Interior walls can be lined with high impact plasterboard to provide a high standard of robust performance.
- Anti vandal window bars/shutters.
- Attractive, comfortable buildings.
- Design for ease of expansion and relocatability.
- Disabled and special needs can be catered for.
- Air conditioning or low surface temperature heating.

## BSF - BUILDING SCHOOLS FOR THE FUTURE

Building Schools for the Future (BSF) is the biggest ever school buildings investment programme.

Kyooob Space have on board a team of experienced professionals who have successfully completed BSF projects including full school decant, partial decant along with individual classrooms.

Kyooob Space offer their experience and expertise to show you the way and help you get there.

### SAMPLE APPLICATIONS

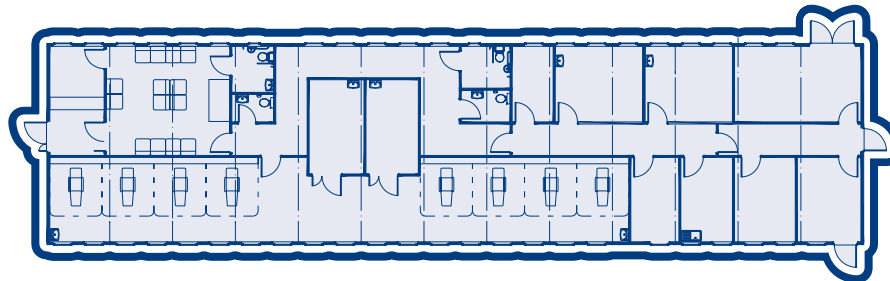
Pre-school Classrooms
After School Clubs
Crèche/Nurseries
Extensions
Laboratories
Office Accommodation
Changing/Toilet Facilities
Community Centres
Classroom Accommodation
Cloakrooms
I.T. Facilities
Quiet Areas



# KYOOB SPACE



- We can provide the full design and build turnkey package
- Full mechanical and electrical fit out, e.g. medical gases, air handling, nurse call systems etc.
- Internally fully fitted out
- Less disruption to patients and the environment
- Reduction in noise – majority of work is carried out off site
- Majority of contracts are completed in 6 -14 weeks from design freeze
- Disabled facilities
- Colour schemes to suit individual wards
- Patient lifts
- All wards can be dry lined, taped, filled and painted
- Compliant to HTM's and HBN's



## SAMPLE APPLICATIONS

Office/Ancillary Accommodation

ITU/STU

Haemoglobinopathy Units

Outpatient Units

Health Centres

Clinics

Nursing/Convalescent Homes

Extensions

Medical Record Storage Areas

Orthopaedic Wards

Consulting Rooms

Doctors' Surgeries

Hospital Extensions

Emergency Rooms

Homes For The Physically Impaired

HEALTHCARE

# KYOOB SPACE



- Earlier occupation of accommodation
- Choose the bespoke building you require with choice of colours, specification, layout etc.
- Future building maintenance reduced
- Quality work completed on time and to budget
- Flexible design
- High quality finishes
- Designed to meet potential expansion
- Multi storey
- Full compliance with Building Regulations and Scottish Building Standards

## SAMPLE APPLICATIONS

Conference Suites

Telephone Call Centres

Retail Space

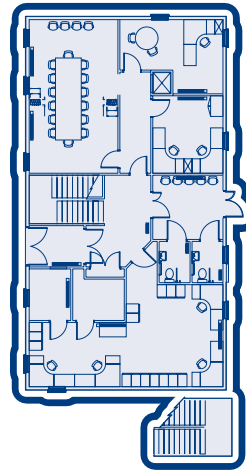
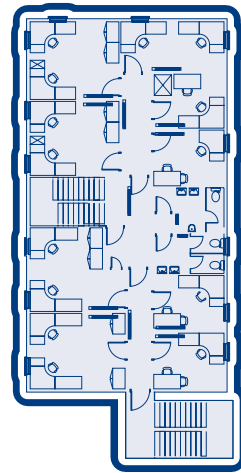
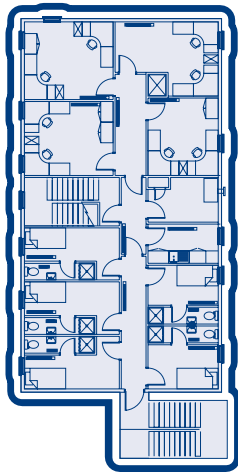
Meeting Rooms

Rest Rooms & Baby Changing Facilities

Open Plan Work Space

Hospitality Suites

Security Offices



# KYOOB SPACE

Kyoob Space offers a wide variety of internal and external options to suit individual requirements.

Some examples of the options available are detailed below.

## INTERIOR

- 18mm ply or alternative timber floor
- Carpet or vinyl
- Furniture
- Category 2 lighting, bulkhead lights, downlighters
- Suspended ceiling (optional)
- Vinyl faced plasterboard walls
- Taped, filled and fully decorated plasterboard walls
- Air conditioning/comfort cooling
- Space heating via wet central heating or electric convection
- Disabled toilets
- Fire alarms and security systems
- Lifts and staircases

## EXTERIOR

- Easy to maintain plastic coated steel cladding
- Traditional finish such as brick cladding
- Pitched tiled roof
- Window guards/shutters
- Variety of colours to BS range
- Single, 2, 3 or 4 storeys high
- Large 'K' glass windows
- Fencing/hoarding
- Ramps, steps and staircases
- External lighting
- Foundations
- Service connections

## KYOOB SPACE SERVICES AND FULL TURNKEY PACKAGE

- Site surveys
- Layout drawings
- Design service
- Full compliance to building regulations
- Foundations/groundworks
- Linking to existing buildings
- Delivery
- Cranage and installation
- Commissioning and connection of services
- Ramps, staircases and steps

## FEATURES & BENEFITS OF KYOOB SPACE BUILDINGS

- Flexibility for future expansion and relocatability
- Fast track, enabling us to meet strict deadlines
- Excellent customer service
- Off site construction minimises level of on site disruption
- More cost effective than that of traditional build
- Noise levels reduced
- Low maintenance, i.e. PVC-U windows and guttering, and powder coated aluminium doors
- Construction is cleaner and quieter



SPECIFICATION





KYOOB  SPACE

22 Napier Court,  
Gander Lane,  
Barlborough Links,  
Derbyshire S43 4PZ  
t 0870 850 5871  
f 0870 850 5884

[www.kyoobspace.com](http://www.kyoobspace.com)